

Second Sight[®] MS

When you cannot trust your eyes...
...trust your Second Sight[®]



Stand-off real time gas cloud detector

- *Wide field of view*
- *Ruggedized equipment*
- *Real-time visualization*
- *Automatic early-warning*
- *Low false alarm*

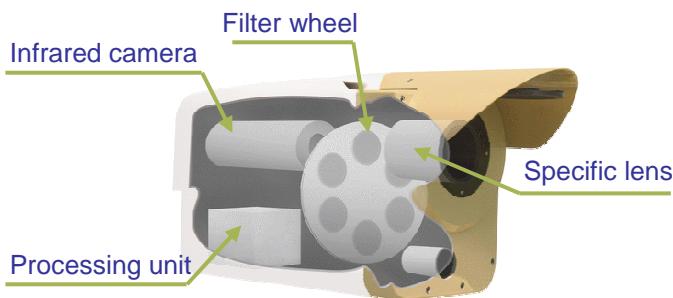


Second Sight® MS

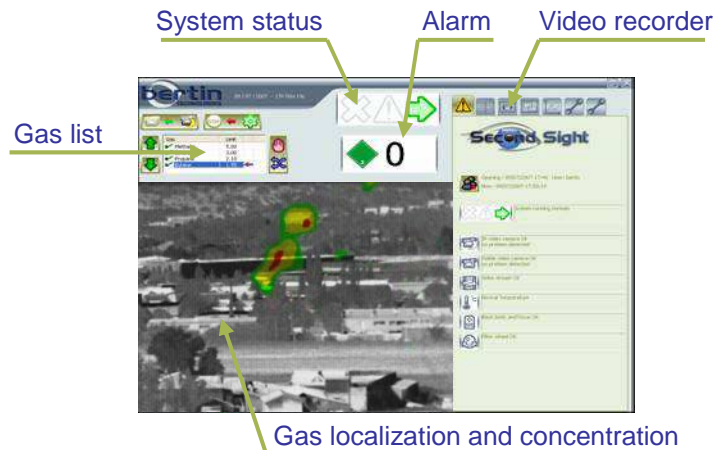
Second Sight® MS is the perfect solution for critical area surveillance and protection against chemical threats (Chemical Warfare Agent, Toxic Industrial Compounds).

With night and day surveillance capability, Second Sight® MS detects and visualizes clouds of dangerous gases at a distance up to 3 km. Its patented infrared process allows a wide field of view with a very high detection probability.

Uncooled microbolometer infrared imager



Friendly-user software interface with real time monitoring



Specifications

Specifications	Second Sight®
Detected gases	<ul style="list-style-type: none"> ▪ Chemical Warfare Agents (CWA) ▪ Volatile Organic Compounds (VOC) ▪ Toxic Industrial Chemical (TIC)
Detection range	1 km (nominal) - up to 3 km (option)
Field of view	30° x 24°
Detection time	one picture every 2 s
Alarm	within 5 s
Autonomy	4 hours with optional battery pack
Weight	18 kg (40 lbs)
Dimensions	670 mm x 280 mm x 330 mm (26.4" x 11.0" x 13.0")
Temperatures	-20°C to 55°C (operation) -20°C to 70°C (storage)
Principle	uncooled LWIR camera

A large area coverage for global surveillance

